



SOBHA ONE

SOBHA
REALTY



SOBHA ONE

QUOTATION

Sobha One (Sobha One Tower E)

SH-298447

Floor Number	37
Type	2 BED - TYPE P
Unit Number	SO-E3710
Saleable Area (Sq.ft)	1,214
Purchase Price (AED)	2,639,645
Pre- Registration Fees (AED)	106,736

Installment Plan

Installment	% of Purchase Price	Amount (AED)	Payment Dates	Milestone
Booking Amount	20.00%	527,929.05	On Booking	On Booking date
First Installment	10.00%	263,964.53	-	9 Months from booking date
Second Installment	10.00%	263,964.53	-	15 Months from booking date
Third Installment	10.00%	263,964.53	-	21 Months from booking date
Fourth Installment	10.00%	263,964.53	-	27 Months from booking date
Final Installment	40.00%	1,055,858.10	-	On Completion

Pre-Registration Fees

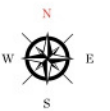
Description	Amount (AED)
4% Pre-Registration Charges	105,586.00
Knowledge Fee	40.00
Oqood Fees	1,110.00

Developer Details

Developer / ID	Sobha LLC / 966
Project Name / ID	Sobha One



MASTER PLAN











SOBHA ONE



FLEXIBLE PAYMENT PLAN

60%

During Construction

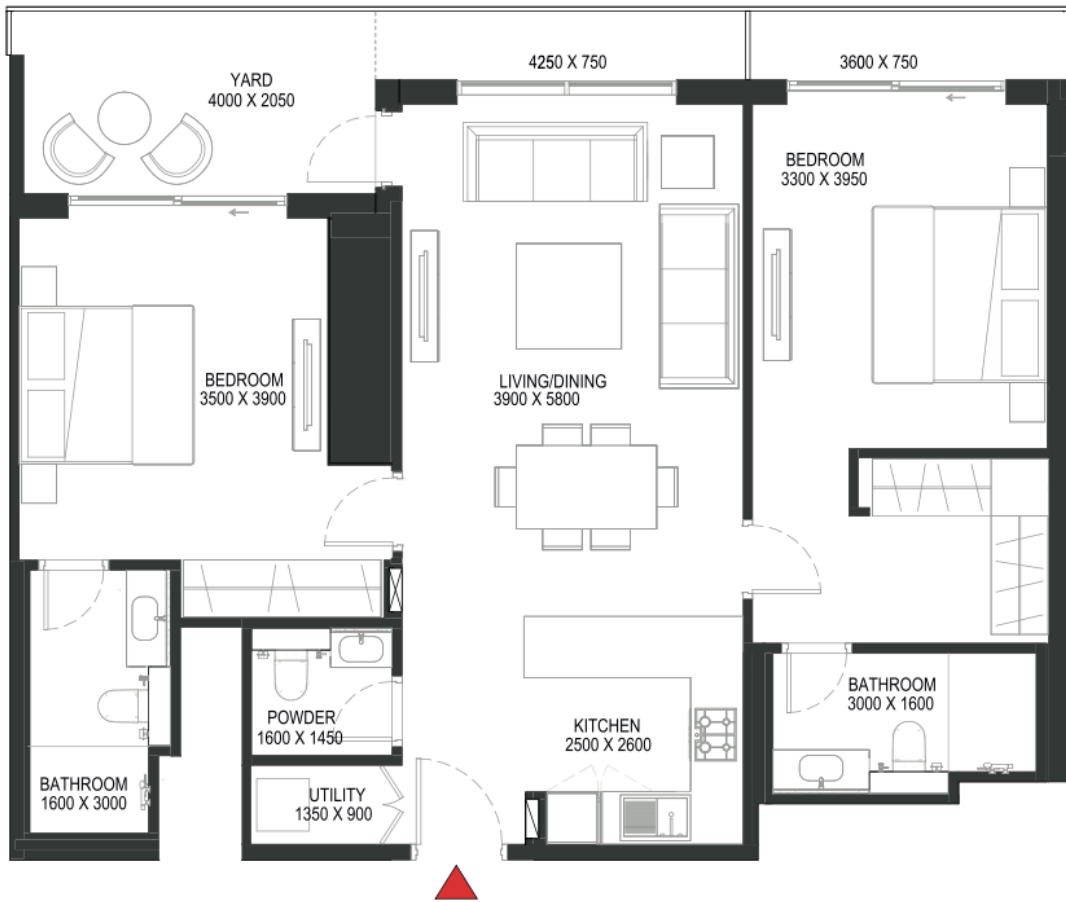
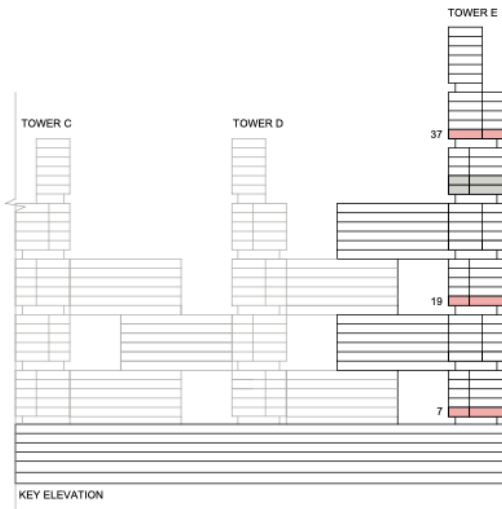
40%

On Completion

Grand 1 to 4 Bedroom apartments & 2, 3, 4 Bedroom Duplex

2 BEDROOM APARTMENT
TYPE P (with powder room + yard) VARIANT 2

TOTAL SALEABLE AREA
 SUITE = 1,035.81 SQ.FT.
 YARD = 177.82 SQ.FT.
 TOTAL = 1,213.63 SQ.FT.



List of unit numbers with this unit plan:

VIEWS

- Creek, Amenities
E710
- Creek, Golf Course, Amenities
E1910
- Creek, Golf Course
E3710



SOBHA ONE

SOBHA
REALTY