



SOBHA ONE

SOBHA  
REALTY



SOBHA ONE

# QUOTATION

Sobha One (Sobha One Tower C)

SH-298414

Floor Number	30
Type	1 BED - TYPE B
Unit Number	SO-C3009
Saleable Area (Sq.ft)	788
Purchase Price (AED)	1,847,156
Pre- Registration Fees (AED)	75,037

## Installment Plan

Installment	% of Purchase Price	Amount (AED)	Payment Dates	Milestone
Booking Amount	20.00%	369,431.30	On Booking	On Booking date
First Installment	10.00%	184,715.65	-	9 Months from booking date
Second Installment	10.00%	184,715.65	-	15 Months from booking date
Third Installment	10.00%	184,715.65	-	21 Months from booking date
Fourth Installment	10.00%	184,715.65	-	27 Months from booking date
Final Installment	40.00%	738,862.60	-	On Completion

**Pre-Registration Fees**

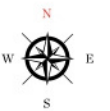
Description	Amount (AED)
4% Pre-Registration Charges	73,887.00
Knowledge Fee	40.00
Oqood Fees	1,110.00

**Developer Details**

Developer / ID	Sobha LLC / g66
Project Name / ID	Sobha One



# MASTER PLAN











SOBHA ONE



FLEXIBLE PAYMENT PLAN

60%

During Construction

40%

On Completion

Grand 1 to 4 Bedroom apartments & 2, 3, 4 Bedroom Duplex



# 1 BEDROOM APARTMENT

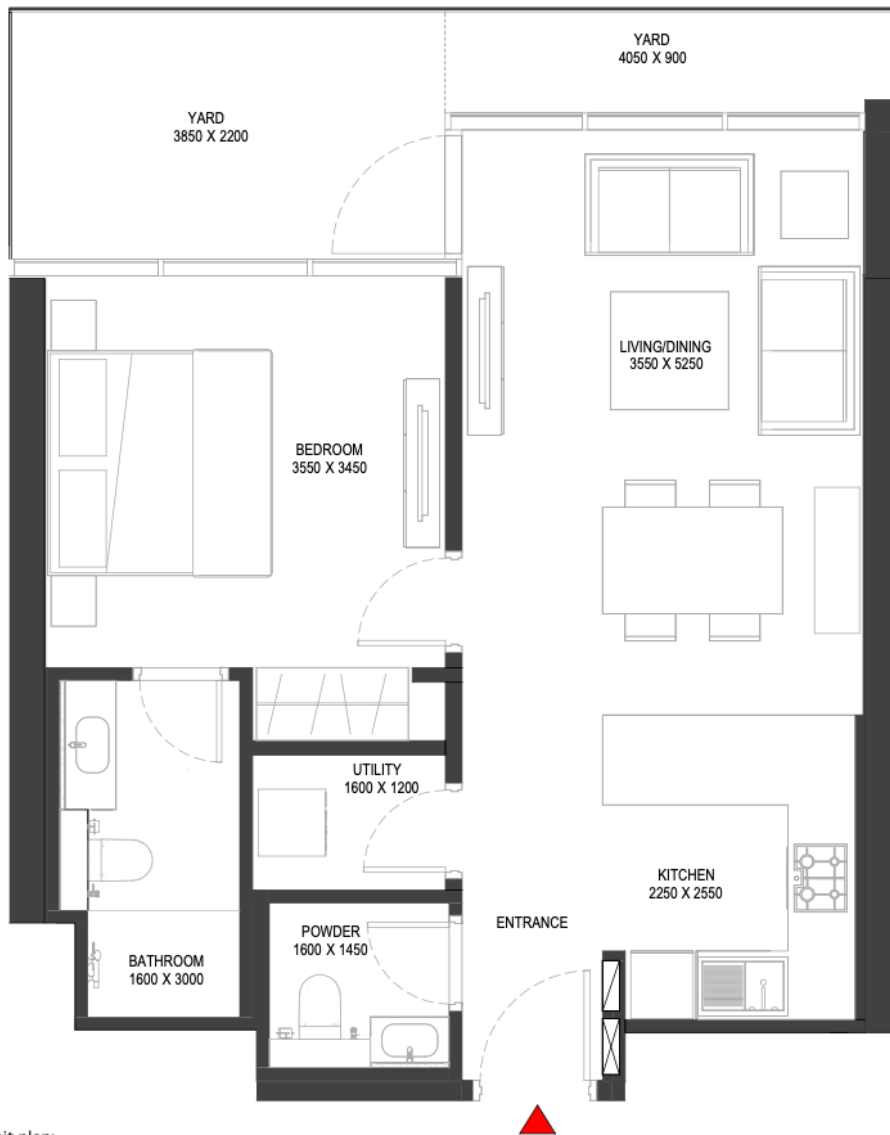
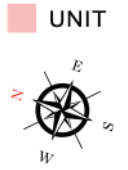
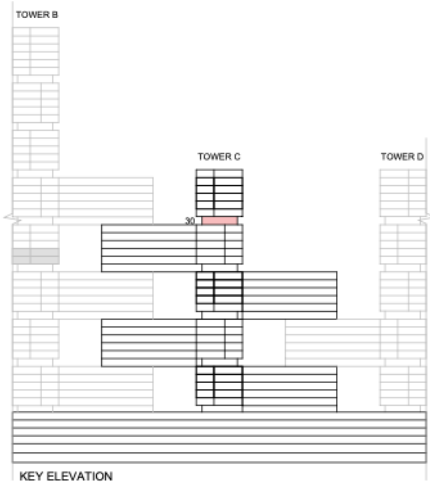
TYPE B (with powder room + yard) VARIANT 5

## TOTAL SALEABLE AREA

SUITE = 652.83 SQ.FT.

YARD = 134.87 SQ.FT.

TOTAL = 787.70 SQ.FT.



List of unit numbers with this unit plan:

## VIEWS

Creek, Golf Course  
C3009



SOBHA ONE

SOBHA  
REALTY